

Superior Abrasive Blast Equipment

elcometer®



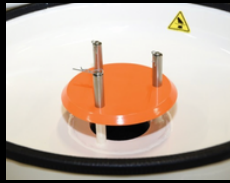
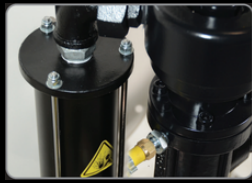
Find us on:



**Elcometer Performance Abrasive Blast Machines are engineered to
work harder, last longer and perform better.**

EFFICIENCY:

- Air flow is optimised with internal of 1½" pipe diameter
- Higher nozzle pressure results in faster coverage
- Allow use of larger sized nozzle
- Vibrator plate affixed to encourage better media flow
- Larger moisture separator



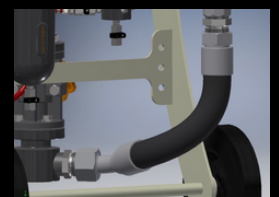
WEAR AND TEAR:

- Replace rubber easily without buying the full repair kit
- elcoTough™ liner is 3-6 times longer lasting and does not distort
- Liner is 3-6 times longer lasting
- Hardwearing pop up valves with reinforced metal guards
- Sacrificial cap on Exhaust "T" replaceable in seconds
- Strengthened mixer "T" life can be doubled by rotating 180°



TIME SAVING:

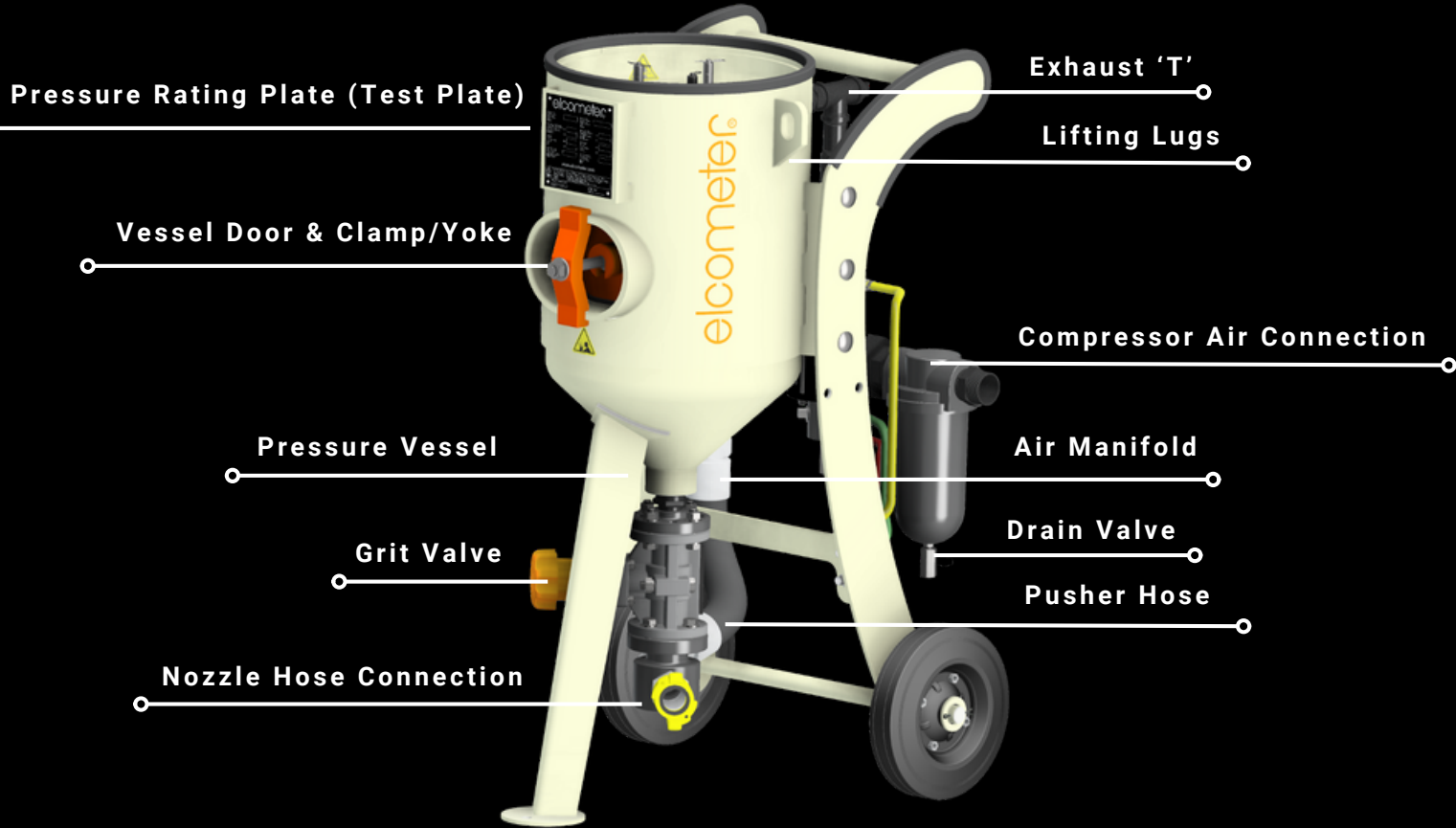
- Large access doorway to reach pop up valves
- Easy alignment with ElcoFit™ wraparound sealing gasket
- Easy removal and maintenance of pusher hose
- Remote control valve and exhaust accessed by just 2 union joints



COST SAVING:

- Less abrasive media consumption
- Approx 14% savings in cost compared to competition
- Reasonably and easily available replacement parts

Every detail of an Elcometer blast equipment is engineered for **efficiency, durability and safety.**

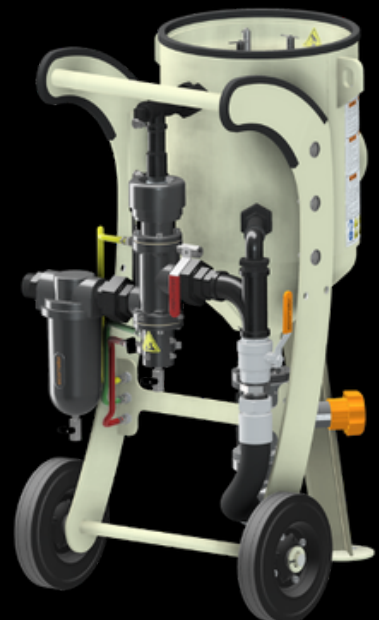
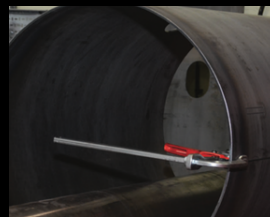


SAFETY AND ERGONOMICS:

- Adjustable height deflector plate to prevent abrasive media escaping
- All components included within handles
- Pipework is protected and machine can be laid down for transport
- Large wheels with low friction bearings
- Perfect balance when lifted, easy to manoeuvre

CERTIFICATION:

- Australian AS1210 approved, ASME approved



Quantum Blast Technologies is pleased to offer Elcometer Blast Equipment in different packages. You can save money by bundling the PPE and accessories and also choose exactly what you want.

Package A

- Deadman Handle
- Pressure Relief Valve 1/2"
- 39mm OD Nylon coupling
- 39mm OD Nylon nozzle holder
- 20metre 25 x 39mm Blast hose
- #7 Boron Carbide Long Venturi Nozzle



Package B

- Package A



- Radex Filter
- Blast Suit
- Blast Pot Lid and Sieve
- Nova 2000 or Nova 3 Helmet
- 20metre Breathing line with CEJN fittings



Nova 2000 or Nova 3